

BID CLARIFICATION #3

May 15, 2015

DUE DATE: May 21, 2015
TIME: 2:00 p.m.
PROJECT: North Eagleville Road Area Infrastructure Phase II
PROJECT NO: #901954
LOCATION: University of Connecticut
Capital Projects & Contract Administration
3 North Hillside Road
Storrs, CT 06269
Attn: Walt Dalia

Please note the following information must be incorporated into your bid for the North Eagleville Road Area Infrastructure Phase II, Project #901954:

- 1.) Attached is AECOM Addendum #2
- 2.) Please replace Alternate Sheet 8A & 8B and Unit Price Sheet 9A & 9B that were provided in Bid Clarification #2 with the attached.
- 3.) Attached are the following: Sheet T1, Sheet C-01, Sheet C-22, and Sheet C-31
- 4.) Attached is the boring log

The University of Connecticut Bid Submission Requirements:

- All bidders must submit their Form of Proposal along with all required forms and any associated bid clarifications as your firm's bid proposal. All required forms must be completed.
- All bidders must initial the bottom of each page within their bid proposal and associated Bid Clarifications attesting to the fact that you have reviewed, read, understood, and accepted the information and terms and conditions within, without exception.
- **YOUR BID PROPOSAL MAY BE CONSIDERED NON-RESPONSIVE AND MAY NOT BE REVIEWED FOR FAILURE TO SUBMIT ALL OF THE ABOVE DOCUMENTATION (ALONG WITH ANY OTHER DOCUMENTATION DETAILED IN THE BID DOCUMENTS AND SPECIFICATIONS)**
- All bid awards must be approved by the University of Connecticut. After review of all factors, terms and conditions, including price, the University of Connecticut reserves the right to reject any and all proposal, or any part thereof, or waive defects in same, or accept any proposal deemed to be in the best interest of the University of Connecticut

University of Connecticut
Walt Dalia, Purchasing Agent II

THIS ADDENDUM FORMS PART OF THE BIDDING DOCUMENTS FOR NORTH EAGLEVILLE ROAD AREA INFRASTRUCTURE REPAIR / REPLACEMENT AND UPGRADE PHASE II – YOUNG QUAD UTILITIES, AND MODIFIES THE ORIGINAL BIDDING DOCUMENTS THAT ARE DATED APRIL 21, 2015.

SPECIFICATIONS

Item No. 1 – Section 01-2200

ADD: Paragraph 2.1 M. to read “Unit Price No. 13: “Milling and Overlay”

1. Description: Mill existing pavement to a 2” depth, and overlay milled area with 2” minimum compacted thickness of class 1 bituminous concrete, in accordance with Section 02500 and Form 816.
2. Unit of Measurement: Square Yard.
3. Quantity Allowance: No additional allowance has been established.”

Item No. 2 – Section 01-2300

REVISE: Paragraph 3.1 C 1. Remove the words “M-10” and Replace with “M-01”

Item No. 3 – Section 01-2300

REVISE: Paragraph 3.1 C 1. Remove the words “Allowance No. 3 provides for the substitution of turf establishment by means of sodding in the disturbed areas, if requested by the Owner.”

Item No. 4 – Section 01-2300

REVISE: Paragraph 3.1 C 3. To read “Alternate No. 3B: The Alternate 3B bid includes all areas indicated on attached Sheet L-03A as Turf Establishment, which includes the areas delineated in Alternate No. 3 Base Bid: stripping all turf; tilling/decompaction to 8” depth; augmentation of existing soils for pH and organics to comply with Section 02939, soil amendments and turf establishment all areas by means of sodding. Any reading of 3B to say only the additional area shall be established via sod is incorrect”

DRAWINGS

The following attached Contract Documents have been re-issued with an Addendum date of 5/15/15. Revisions to the drawings are noted on each sheet encircled with a “bubble” and a revision mark. A summary of the changes is as follows:

Sheet T1

- ADDED: “C-31 BORING LOGS” to list of Contract Drawings.
- ADDED: “L-03A LANDSCAPE PLAN AND DETAILS” to list of Contract Drawings.

Sheet C-01

- ADDED: General Note to read “27. All piping installed by the contractor inside all buildings and all vaults shall be insulated in accordance with specification section 15082”.

Sheet C-22

- REVISED: call out to read “1.5” Pre-insulated Condensate to Hicks Arena”
- REVISED: call out to read “4”x1.5” Tee”

Sheet C-31

- ADDED: Sheet C-31 – Boring Logs

SECTION 01-2200 - UNIT PRICES

PART 1 - GENERAL

1.1 RELATED DOCUMENTS

- A. Drawings and general provisions of the Contract, including General and Supplementary Conditions and other Division 01 Specification Sections, apply to this Section.

1.2 SUMMARY

- A. Section includes administrative and procedural requirements for unit prices.
 - 1. A unit price is an amount stated on the Proposal Form or in the Specifications as a price per unit of measurement for materials or services that will be added to or deducted from the Contract Sum by Change Order in the event the quantities of Work required by the Contract Documents are increased or decreased.
 - 2. Unit Prices include all necessary material, overhead, profit, and applicable taxes.
 - 3. Refer to individual Specification Sections for construction activities requiring the establishment of unit prices. Methods of measurement and payment for unit prices are specified in those Sections.
- B. Related Requirements:
 - 1. Division 01 Section "Contract Modification Procedures" for procedures for submitting and handling Change Orders.
 - 2. Division 01 Section "Quality Requirements" for general testing and inspecting requirements.

1.3 DEFINITIONS

- A. Unit price is an amount incorporated in the Agreement, applicable during the duration of the Work as a price per unit of measurement for materials, equipment, or services, or a portion of the Work, added to or deducted from the Contract Sum by appropriate modification, if the Scope of Work or estimated quantities of Work required by the Contract Documents are increased or decreased.

1.4 PROCEDURES

- A. Unit prices include all necessary material, plus cost for delivery, installation, insurance, applicable taxes, overhead, and profit.
- B. Measurement and Payment: See individual Specification Sections for work that requires establishment of unit prices. Methods of measurement and payment for unit prices are specified in those Sections.

UNIT PRICES

01-2200-2

- C. Owner reserves the right to reject Contractor's measurement of work-in-place that involves use of established unit prices and to have this work measured, at Owner's expense, by an independent surveyor acceptable to Contractor.
- D. List of Unit Prices: A schedule of unit prices is included in Part 3. Specification Sections referenced in the schedule contain requirements for materials described under each unit price.

PRODUCTS (Not Used)

PART 2 - EXECUTION

2.1 SCHEDULE OF UNIT PRICES

- A. Unit Price 1: "Removal Of Unsatisfactory Soil And Replacement With Satisfactory Soil Material".
 - 1. Description: Unsatisfactory soil excavation and disposal off site and replacement with satisfactory fill material or engineered fill from off site, as required, according to Section 02221 "Trench Excavation, Backfilling and Compaction". Replacement materials shall be "Compacted Granular Fill" in accordance with Section 02234.
 - 2. Unit of Measurement: Cubic yard of soil excavated, based on survey of volume removed.
 - 3. Quantity Allowance: Coordinate unit price with allowance adjustment requirements in Division 01 Section "Allowances."
- B. Unit Price No. 2: "Rock Excavation And Replacement With Satisfactory Soil Material".
 - 1. Description: Classified rock excavation and disposal off site and replacement with satisfactory fill material or engineered fill from off site, as required, according to Section 02221 "Trench Excavation, Backfilling and Compaction". Replacement materials shall be "Compacted Granular Fill" in accordance with Section 02234.
 - 2. Unit of Measurement: Cubic yard of rock excavated and replaced, based on survey of volume removed.
 - 3. Quantity Allowance: Coordinate unit price with allowance adjustment requirements in Division 01 Section "Allowances."
- C. Unit Price No. 3: "Turf Establishment By Means Of Sodding".
 - 1. Description: Turf establishment by means of sodding, if requested by the Owner, according to Section 02936 "Turfs And Grasses".
 - 2. Unit of Measurement: Square Yard.
 - 3. Quantity Allowance: No additional allowance has been established.
- D. Unit Price No. 4: "Concrete Walkway".
 - 1. Description: Replacement of concrete walkways beyond the limits of work identified on the Contract Drawings, if requested by the Owner, according to Section 02511 "Concrete Walkway". Price includes removal and disposal of existing concrete walkways to be replaced. Concrete walkway details shall be in accordance with the concrete sidewalk details on Sheet C-27.

UNIT PRICES

01-2200-3

2. Unit of Measurement: Square Yard.
 3. Quantity Allowance: Coordinate unit price with allowance adjustment requirements in Division 01 Section "Allowances."
- E. Unit Price No. 5: "Process Aggregate Base".
1. Description: Replacement of process aggregate base beyond the limits of the Contract Drawings, if requested by the Owner, according to Section 02235 "Process Aggregate Base".
 2. Unit of Measurement: Cubic Yard.
 3. Quantity Allowance: Coordinate unit price with allowance adjustment requirements in Division 01 Section "Allowances."
- F. Unit Price No. 6: "Bituminous Pavement".
1. Description: Replacement of bituminous pavement beyond the limits of the Contract Drawings, if requested by the Owner, according to Section 02500 "Bituminous Concrete". Price includes removal and disposal of existing bituminous pavement to be replaced. Pavement section shall be in accordance with permanent trench pavement detail for Town Roads on Sheet C-27.
 2. Unit of Measurement: Ton.
 3. Quantity Allowance: Coordinate unit price with allowance adjustment requirements in Division 01 Section "Allowances."
- G. Unit Price No. 7: "Mulch".
1. Description: Placement of mulch beyond the limits shown on the Contract Drawings, if requested by the Owner, according to Section 02938 "Planting". Price includes edging, removal and disposal of turf in the area of mulch placement.
 2. Unit of Measurement: Cubic Yard.
 3. Quantity Allowance: Coordinate unit price with allowance adjustment requirements in Division 01 Section "Allowances."
- H. Unit Price No. 8: "Hydroseeding"
1. Description: Turf establishment by means of hydroseeding, if requested by the Owner, according to Section 02936 "Turfs And Grasses".
 2. Unit of Measurement: Square Yard.
 3. Quantity Allowance: No additional allowance has been established.
- I. Unit Price No. 9: "Topsoil"
1. Description: Provide and place topsoil, if requested by the Owner, according to Section 02939 "Topsoil and Planting Mix".
 2. Unit of Measurement: Cubic Yard.
 3. Quantity Allowance: No additional allowance has been established.
- J. Unit Price No. 10: "Topsoil Reconditioning"
1. Description: Stripping of existing turf, soil decompaction to a minimum of 8" depth, augmentation of existing soils for pH and organics to comply with Section 02939, and soil amendments.
 2. Unit of Measurement: Square Yard.
 3. Quantity Allowance: No additional allowance has been established.

UNIT PRICES

01-2200-4

- K. Unit Price No. 11: "Survey Monuments"
1. Description: Provide 4' deep by 6" diameter cast-in-place concrete survey monuments at locations to be determined by the Owner within the Young Quad Utilities Work Zone. Owner to provide top medallion to be installed by Contractor.
 2. Unit of Measurement: Each.
 3. Quantity Allowance: No additional allowance has been established
- L. Unit Price No. 12: "Soil Decompaction With SSAT Within CRZ"
1. Description: Provide soil decompaction with a SuperSonic Airtool within the critical root zones of trees in accordance with Section 02937 3.2 R.
 2. Unit of Measurement: Square Yard.
 3. Quantity Allowance: No additional allowance has been established
- M. Unit Price No. 13: Unit Price No. 13: "Milling and Overlay"
1. Description: Mill existing pavement to a 2" depth, and overlay milled area with 2" minimum compacted thickness of class 1 bituminous concrete, in accordance with section 02500 and Form 816.
 2. Unit of Measurement: Square Yard.
 3. Quantity Allowance: No additional allowance has been established."

END OF SECTION 01-2200

SECTION 01-2300 - ALTERNATES

PART 1 - GENERAL

1.1 RELATED DOCUMENTS

- A. Drawings and general provisions of the Contract, including General and Supplementary Conditions and other Division 01 Specification Sections, apply to this Section.

1.2 SUMMARY

- A. Section includes administrative and procedural requirements for alternates.

1.3 DEFINITIONS

- A. Alternate: An amount proposed by bidders and stated on the Bid Form for certain work defined in the bidding requirements that may be added to or deducted from the base bid amount if Owner decides to accept a corresponding change either in the amount of construction to be completed or in the products, materials, equipment, systems, or installation methods described in the Contract Documents.
 - 1. Alternates described in this Section are part of the Work only if enumerated in the Agreement.
 - 2. The cost or credit for each alternate is the net addition to or deduction from the Contract Sum to incorporate alternate into the Work. No other adjustments are made to the Contract Sum.

1.4 PROCEDURES

- A. Coordination: Revise or adjust affected adjacent work as necessary to completely integrate work of the alternate into Project.
 - 1. Include as part of each alternate, miscellaneous devices, accessory objects, and similar items incidental to or required for a complete installation whether or not indicated as part of alternate.
- B. Notification: Immediately following award of the Contract, notify each party involved, in writing, of the status of each alternate. Indicate if alternates have been accepted, rejected, or deferred for later consideration. Include a complete description of negotiated revisions to alternates.
- C. Execute accepted alternates under the same conditions as other work of the Contract.
- D. Schedule: A schedule of alternates is included at the end of this Section. Specification Sections referenced in schedule contain requirements for materials necessary to achieve the work described under each alternate.
- E. Alternates shall be valid for the life of the contract and may be selected within 30 days from notice to proceed at no additional cost to the owner. Alternates may be negotiated as applicable, in the event the owner selects the alternate beyond the 30 day period from notice to proceed.

PART 2 - PRODUCTS (Not Used)

PART 3 - EXECUTION

3.1 SCHEDULE OF ALTERNATES

A. Alternate No. 1 – Steam Vault Manhole Covers

1. Base Bid: The base bid includes Steam Vault manhole frames and covers manufactured of cast iron as specified in Section 03420 2.02.
2. Alternate 1: The alternate bid includes Steam Vault watertight manhole frames and covers manufactured of fiberglass as specified in Section 03420 2.03.

B. Alternate No. 2 – Steam Vault Waterproofing System

1. Base Bid: The base bid includes Steam Vault bituminous waterproofing system as specified in Section 03420 2.04.
2. Alternate 2A: The alternate bid includes Steam Vault HDPE Membrane waterproofing system as specified in Section 03420 2.05.
3. Alternate 2B: The alternate bid includes Steam Vault Bentonite membrane waterproofing system as specified in Section 03420 2.06.

C. Alternate No. 3 – Turf Establishment

1. Base Bid: The base bid includes 8" of topsoil and turf establishment by seeding and/or hydroseeding of all disturbed areas within the Young Quad Utilities Work Zone as indicated on Sheets M-01 through M-03, and not subject to other surface improvements such as sidewalk, pavement and mulch. At a minimum the disturbed areas shall include all areas within the following boundaries: west boundary – stone wall along Route 195; north boundary – east/west sidewalk south of Ratcliffe Hicks; east boundary – north/south sidewalk west of Young Building; south boundary – east/west sidewalk north of Hicks Hall. Additionally, all areas within the Young Quad Utilities Work Zone disturbed by the Contractor during construction activities shall be provided with 8" topsoil and turf establishment. Disturbed areas shall be defined as all areas subject to disturbance by construction activities, excavation, backfill, equipment traffic, trailer, material storage, and laydown areas.

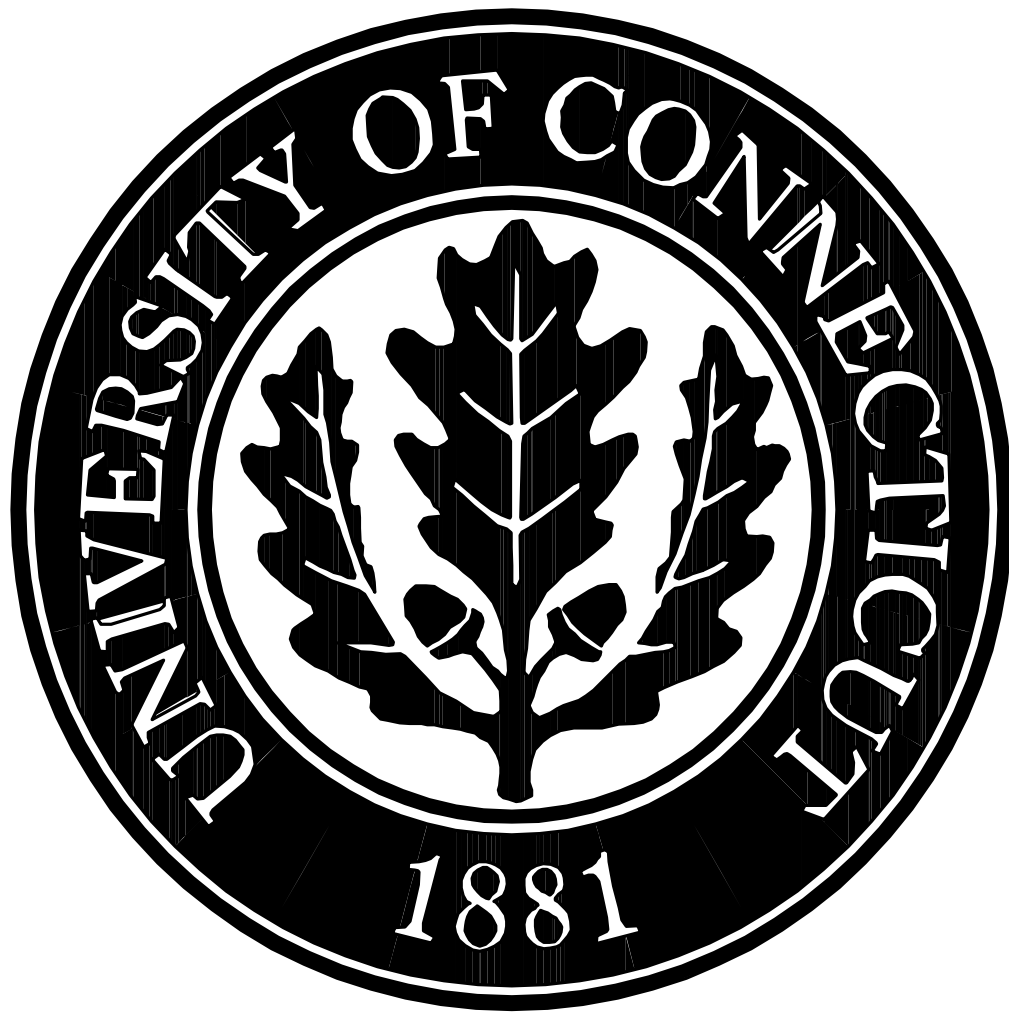
ALTERNATES

01-2300-3

2. Alternate No. 3A: The Alternate 3A bid includes the Alternate No. 3 Base Bid, plus for all remaining areas indicated on attached Sheet L-03A: stripping all turf; tilling/decompaction to 8" depth; augmentation of existing soils for pH and organics to comply with Section 02939, soil amendments and turf establishment by means of hydroseeding.
3. Alternate No. 3B: Alternate No. 3B: The Alternate 3B bid includes all areas indicated on attached Sheet L-03A as Turf Establishment, which includes the areas delineated in Alternate No. 3 Base Bid: stripping all turf; tilling/decompaction to 8" depth; augmentation of existing soils for pH and organics to comply with Section 02939, soil amendments and turf establishment all areas by means of sodding. Any reading of 3B to say only the additional area shall be established via sod is incorrect.

END OF SECTION 01-2300

STATE OF CONNECTICUT
UNIVERSITY OF CONNECTICUT



SUSAN HERBST
PRESIDENT

NORTH EAGLEVILLE ROAD AREA
INFRASTRUCTURE REPAIR/REPLACEMENT AND UPGRADE
PHASE II - YOUNG QUAD UTILITIES

STORRS CAMPUS

CONTRACT DOCUMENTS

PROJECT NO. 901954

PREPARED FOR:

PLANNING, ARCHITECTURAL & ENGINEERING SERVICES

31 LEDOYT RD. UNIT 3038
STORRS, CT 06269
860-486-3127

APRIL 21, 2015

PROJECT CONSULTANT

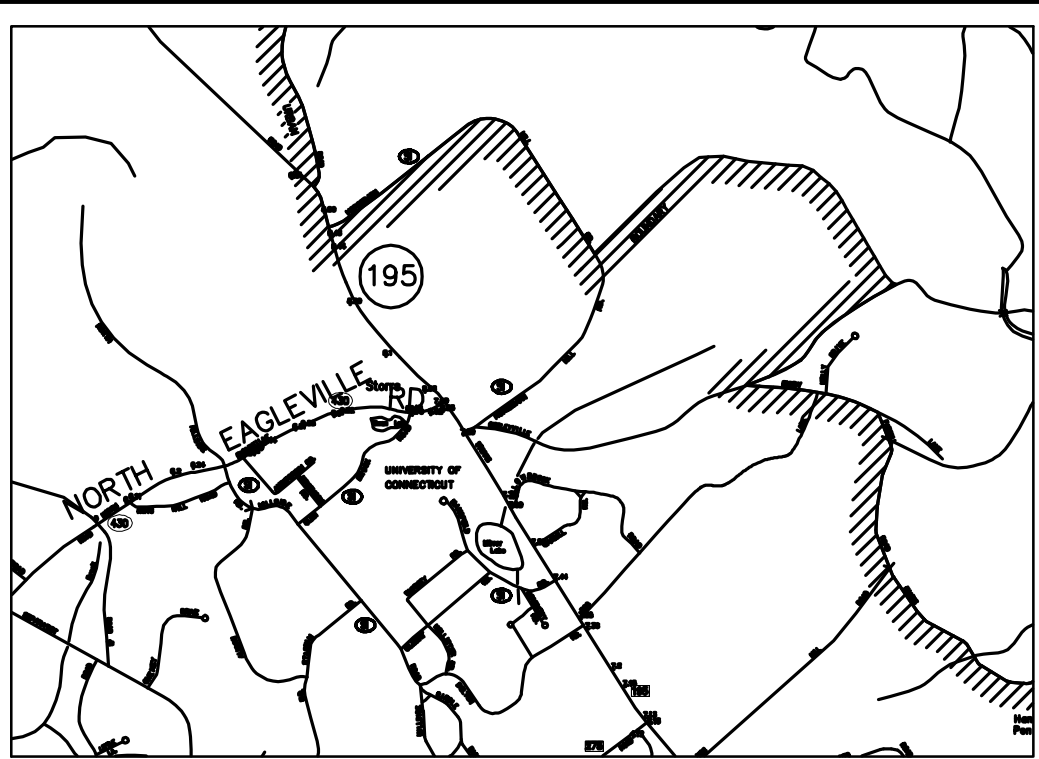
Civil Engineer:

AECOM
500 ENTERPRISE DRIVE
ROCKY HILL, CT 06067
1-(860)-529-8882



CONTRACT DRAWINGS

T1	TITLE SHEET
C-1	LEGEND, SURVEY CONTROL & GENERAL NOTES
C-2	EXISTING CONDITIONS PLAN
C-3	COMPOSITE UTILITY PLAN
C-4	SANITARY FORCE MAIN PLAN AND PROFILE
C-5	SANITARY SEWER PLAN AND PROFILE
C-6	WATER MAIN PLAN AND PROFILE
C-7	STEAM AND CONDENSATE PLAN AND PROFILE
C-8	ELECTRICAL DUCTBANK PLAN AND PROFILE
C-9	TELE-COMMUNICATION DUCTBANK PLAN AND PROFILE
C-10	SUPPLEMENTAL UTILITY PROFILES
C-11	GRADING PLAN
C-12	SITE MATERIALS PLAN
C-13	HICKS ARENA SITE PLAN
C-14	SOIL EROSION AND SEDIMENTATION CONTROL PLAN
C-15	SANITARY FORCE MAIN DETAILS
C-16	SANITARY AND STORM SEWER DETAILS
C-17	WATER MAIN DETAILS
C-18	WATER MAIN CONNECTION DETAILS
C-19	STEAM AND CONDENSATE DETAILS
C-20	STEAM AND CONDENSATE CONNECTION DETAILS
C-21	STEAM AND CONDENSATE CONNECTION DETAILS
C-22	STEAM VAULT B-6
C-23	SOUTH STEAM VAULT
C-24	ELECTRICAL DETAILS
C-25	ELECTRICAL AND TELECOMMUNICATION DUCTBANK DETAILS
C-26	TELE-COMMUNICATION DETAILS
C-27	MISCELLANEOUS SITE DETAILS
C-28	MISCELLANEOUS SITE DETAILS
C-29	MISCELLANEOUS SITE DETAILS
C-30	SOIL EROSION AND SEDIMENTATION CONTROL DETAILS
C-31	BORING LOGS
L-01	TREE PROTECTION AND PRESERVATION PLAN
L-02	TREE PROTECTION DETAILS
L-03	LANDSCAPE PLAN AND DETAILS
L-03A	LANDSCAPE PLAN AND DETAILS
M-01	PEDESTRIAN DETOUR PLAN STAGE 1 CONSTRUCTION
M-02	PEDESTRIAN DETOUR PLAN STAGE 2 CONSTRUCTION
M-03	PEDESTRIAN DETOUR PLAN STAGE 3 CONSTRUCTION
M-04	MAINTENANCE AND PROTECTION OF TRAFFIC ROUTE 195
M-05	MAINTENANCE AND PROTECTION OF TRAFFIC ROUTE 195 DETAILS



PROJECT SITE LOCATION
NO SCALE

GENERAL NOTES

1. UNDERGROUND UTILITY, STRUCTURE AND FACILITY LOCATIONS DEPICTED ON THE CONTRACT DRAWINGS HAVE BEEN COMPILED, IN PART, FROM RECORD MAPPING AND OTHER DATA UPPLIED BY RESPECTIVE UTILITY COMPANIES, AND/OR OTHER SOURCES. THESE LOCATIONS MUST BE CONSIDERED APPROXIMATE IN NATURE. ADDITIONALLY, OTHER UTILITY AND UNDERGROUND FEATURES, WHICH ARE UNKNOWN TO AECOM, MAY EXIST ON THE SITE. THE PRESENCE, SIZE AND LOCATION OF ALL UNDERGROUND FEATURES MUST BE DETERMINED AND VERIFIED IN THE FIELD BY THE APPROPRIATE AUTHORITIES PRIOR TO CONSTRUCTION. THE CONTRACTOR SHALL REQUEST MARK OUT OF UTILITY LOCATION FROM CALL BEFORE YOU DIG (1-800-922-4455 OR 811) AT LEAST 72 HOURS PRIOR TO ANY EXCAVATION OPERATION.
2. AS CONSTRUCTION IS COMPLETED, THE CONTRACTOR SHALL REMOVE ALL EXCESS MATERIAL, DEBRIS, ETC. AND RESTORE AND/OR REPAIR ANY DAMAGE TO LANDSCAPING.
3. ANY PIPE LENGTHS SHOWN ARE MEASURED FROM CENTER TO CENTER OF FITTINGS.
4. AREAS OUTSIDE THE WORK LIMITS INCLUDING BUT NOT LIMITED TO DRIVEWAYS, ROADS, STAIRS AND SIDEWALKS, THAT ARE DISTURBED BY CONSTRUCTION SHALL BE RETURNED TO THEIR ORIGINAL CONDITION OR BETTER AND SHALL BE GRADED TO MEET PROPOSED CONSTRUCTION AS DIRECTED BY THE ENGINEER. COST FOR THIS WORK SHALL BE BORNE BY THE CONTRACTOR AT NO ADDITIONAL COST TO THE UNIVERSITY.
5. THE CONTRACTOR SHALL PROCURE ALL THE NECESSARY PERMITS AND LICENSES, AT THE TIME REQUIRED, PAY ALL CHARGES AND FEES, AND GIVE NOTICES NECESSARY AND DUE IN CONNECTION WITH THE LAWFUL EXECUTION OF THE WORK AT NO ADDITIONAL COST TO THE UNIVERSITY. THE CONTRACTOR WILL BE REQUIRED TO SECURE AN ENCROACHMENT PERMIT FROM THE STATE OF CONNECTICUT DEPARTMENT OF TRANSPORTATION – DISTRICT 2, FOR ALL WORK WITHIN THE STATE RIGHT-OF-WAY FOR ROUTE 195.
6. EXCAVATION OF ANY TYPE SHALL BE ACCOMPLISHED IN SUCH A MANNER THAT UNDERGROUND UTILITIES OR STRUCTURES ARE NOT DAMAGED. IT SHALL BE THE CONTRACTOR'S SOLE RESPONSIBILITY FOR ANY DAMAGE INCURRED DURING EXCAVATION OPERATIONS. ALL EXCAVATION SHALL BE IN CONFORMANCE WITH THE LATEST OSHA REQUIREMENTS.
7. ALL UTILITY BOXES, FRAMES, GRATES, ETC. AFFECTED BY THE CONSTRUCTION ACTIVITIES, SHALL BE RESET TO THE PROPER GRADE. ALL COST RELATED TO SUCH WORK SHALL BE CONSIDERED TO BE INCLUDED IN THE LUMP SUM BID.
8. ALL COORDINATION BETWEEN THE CONTRACTOR AND THE UNIVERSITY SHALL BE THROUGH THE UNIVERSITY OF CONNECTICUT CONSTRUCTION PROJECT MANAGER ASSIGNED TO THIS PROJECT.
9. ANY UTILITY SERVICE CONNECTIONS (GAS, STEAM, WATER, SEWAGE, ELECTRIC, TELECOMMUNICATIONS, ETC.) DISTURBED BY THE CONSTRUCTION ACTIVITIES SHALL BE REPAIRED AND SERVICE RESTORED. AT NO TIME SHALL ANY EXISTING BUILDING BE WITHOUT SERVICES (INCLUDING FIRE PROTECTION) WITHOUT PRIOR CONSENT FROM THE PARTICULAR UTILITY AUTHORITY. NO FIRE PROTECTION UTILITIES OF ANY KIND WILL BE DISRUPTED WITHOUT PERMISSION FROM THE FIRE MARSHALL. THE CONTRACTOR SHALL COORDINATE HIS WORK, PRIOR TO A UTILITY SHUTDOWN, WITH THE UTILITY COMPANY AND THE UNIVERSITY.
10. THE CONTRACTOR SHALL SUFFICIENTLY COVER ALL DISTURBED AREAS AT THE END OF EACH WORK DAY TO AVOID ANY RISK OF INJURY TO PEDESTRIAN OR VEHICULAR TRAFFIC. THE CONTRACTOR SHALL INSTALL TEMPORARY SUPPORT SYSTEMS OVER TRENCH EXCAVATIONS THAT ARE TAMPER RESISTANT AND SAFE FOR VEHICULAR AND PEDESTRIAN TRAFFIC. THE CONTRACTOR SHALL INSTALL BARRICADES TO PROTECT AGAINST PEDESTRIAN ACCESS. THE CONTRACTOR SHALL OBTAIN APPROVAL OF THE TEMPORARY SAFETY MEASURES BY THE ENGINEER AND THE UNIVERSITY.
11. THE STANDARD SPECIFICATIONS (FOR SITE WORK) SHALL MEAN THE STATE OF CONNECTICUT, DEPARTMENT OF TRANSPORTATION, STANDARD SPECIFICATIONS FOR ROADS, BRIDGES, AND INCIDENTAL CONSTRUCTION, FORM 816 2004, INCLUDING ALL SUPPLEMENTS THERETO.
12. ALL DISTURBED AREAS, NOT PROVIDED WITH SPECIFIC SURFACE IMPROVEMENTS (PAVING, SIDEWALK, LANDSCAPING, ETC.) SHALL HAVE TOPSOIL AND TURF ESTABLISHED IN ACCORDANCE WITH THE SPECIFICATIONS.
13. LOCATION AND ELEVATION OF ALL UNDERGROUND UTILITIES INSTALLED OR FOUND DURING CONSTRUCTION SHALL BE INDICATED BY THE CONTRACTOR ON RECORD DRAWINGS, MEASURED FROM PERMANENT SURFACE FEATURES.
14. THE CRITICAL ROOT ZONE OF EXISTING TREES IN PROXIMITY TO THE PROJECT AREA ARE SHOWN ON SHEET L-01. ALL WORK WITHIN THE DRIP LINES OF EXISTING TREES SHALL BE DONE IN ACCORDANCE WITH THE RECOMMENDATIONS OF THE CONTRACTOR'S CERTIFIED ARBORIST. ALL WORK WITHIN THE CRITICAL ROOT ZONE OF EXISTING TREES SHALL BE ACCOMPLISHED IN ACCORDANCE WITH THE REQUIREMENTS OF SECTION 02937-"TREE PROTECTION AND PRESERVATION".
15. THE CONTRACTOR IS REQUIRED TO EXCAVATE TEST PITS AS SHOWN ON THE PLAN SHEETS. THIS WORK SHALL BE COMPLETED AS GENERAL EXCAVATION AND SHALL BE COMPLETED A MINIMUM OF TWO WEEKS PRIOR TO THE START OF EXCAVATION. THE CONTRACTOR SHALL NOTIFY THE ENGINEER IF EXISTING CONDITIONS CONFLICT WITH PROPOSED WORK AS SHOWN HEREON.
16. THE EXISTING UTILITIES AND FACILITIES WILL BE IN CONTINUOUS OPERATION DURING THE EXECUTION OF THE WORK. THE CONTRACTOR SHALL COORDINATE ALL ACTIVITIES TO MINIMIZE DISRUPTIONS TO THE UTILITIES AND FACILITIES. THE CONTRACTOR SHALL COORDINATE ALL WORK AND WORK PROCEDURES WITH THE REQUIREMENTS OF THE LOCAL AUTHORITIES AND THE UNIVERSITY. BEFORE ANY WORK PROCEEDS, NOTIFY THE ENGINEER/UNIVERSITY OF THE PROPOSED SCHEDULE. DISRUPTION OF UTILITY OPERATIONS SHALL BE MINIMAL AND THE SAFETY OF EMPLOYEES AND THE PUBLIC SHALL BE MAINTAINED.
17. THE CONTRACTOR SHALL PERFORM ALL OPERATIONS OF DEMOLITION AND REMOVAL AS MAY BE REQUIRED FOR HIS WORK. THE EXISTING UTILITIES SHALL BE CAPPED AND ABANDONED IN PLACE WITH OUT FILLING UNLESS NOTED OTHERWISE ON THE CONTRACT DRAWINGS.
18. THE CONTRACTOR SHALL COMPLETE ALL WORK SO THAT ANY MATERIALS WHICH ARE TO REMAIN IN PLACE OR WHICH ARE TO REMAIN THE PROPERTY OF THE UNIVERSITY, WILL NOT BE DAMAGED. IF THE MATERIALS WHICH ARE TO REMAIN, OR WHICH ARE TO REMAIN THE PROPERTY OF THE UNIVERSITY, THE DAMAGED MATERIALS SHALL BE REPLACED TO THE SATISFACTION OF THE ENGINEER/UNIVERSITY AT THE EXPENSE OF THE CONTRACTOR.

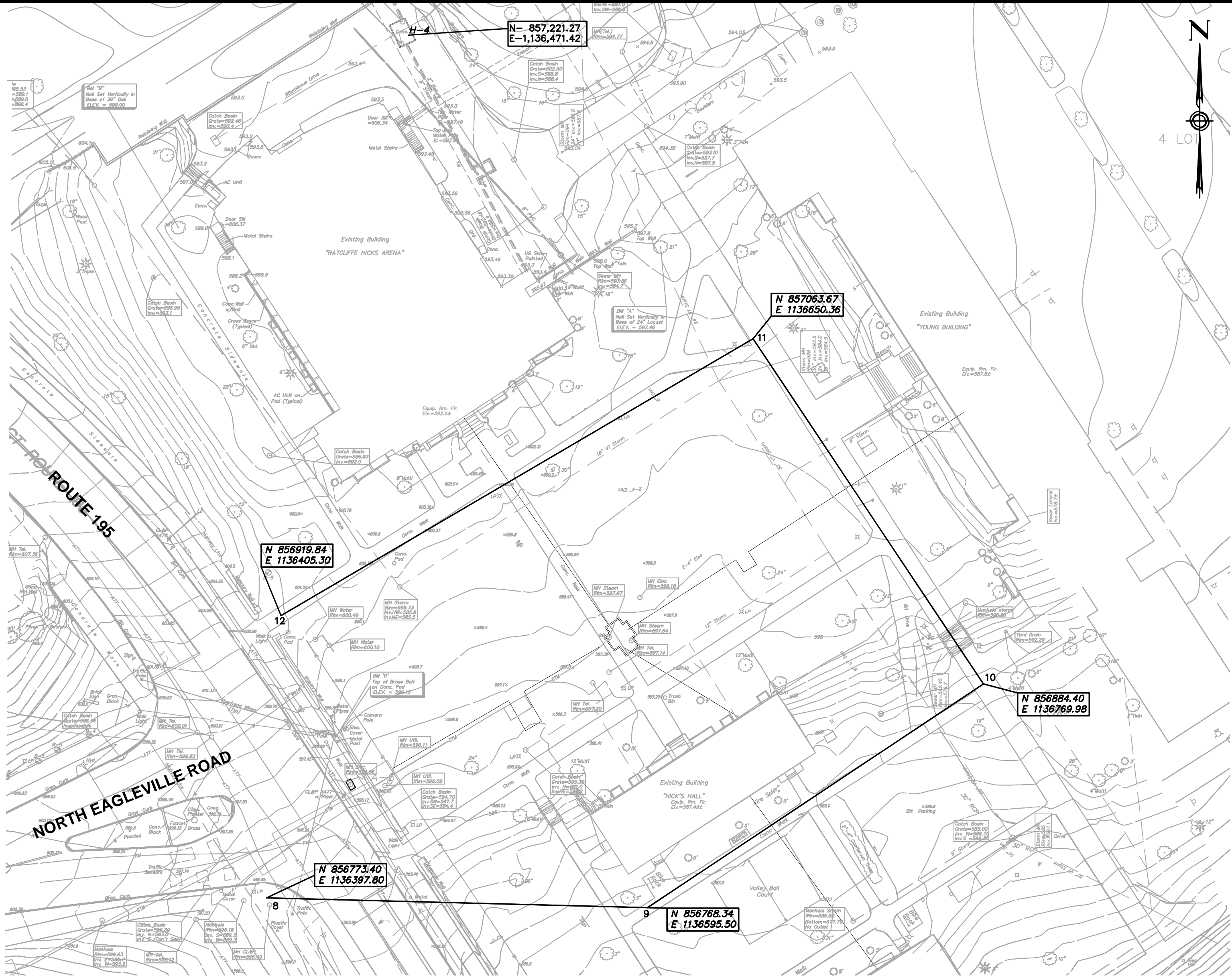
19. NO MATERIAL SHALL BE STORED ON SITE UNLESS THE PROPOSED STORAGE LOCATION IS APPROVED BY THE OWNER'S REPRESENTATIVE.
20. AFTER THE CONSTRUCTION HAS BEEN COMPLETED, THE CONTRACTOR SHALL REMOVE ALL EXCESS MATERIAL, DEBRIS, ETC. AND RESTORE OR REPAIR ANY DAMAGE TO LANDSCAPING AS DIRECTED BY THE OWNER'S REPRESENTATIVE.
21. PROTECT EXISTING TREES OR SHRUBS TO REMAIN NEAR CONSTRUCTION OPERATIONS BY BOXING OR FENCING IN ACCORDANCE WITH THE "CONNECTICUT GUIDELINES FOR SOIL EROSION AND SEDIMENT CONTROL" REVISED 2002 AND THE SPECIFICATION.
22. SOIL EROSION AND SEDIMENT CONTROL MEASURES SHALL CONFORM TO THE "CONNECTICUT GUIDELINES FOR SOIL EROSION AND SEDIMENT CONTROL" REVISED 2002.
23. ALL PROPOSED WORK MAY BE VARIED IN THE FIELD BY THE OWNER'S REPRESENTATIVE TO MEET EXISTING CONDITIONS.
24. THE CONTRACTOR SHOULD ANTICIPATE IN HIS BID THAT THE AREA OF HIS PROPOSED WORK MAY BE ENCUMBERED BY UTILITY COMPANIES FOR THE REMOVAL/RELOCATION/ADJUSTMENT/CONSTRUCTION OF UTILITIES. THE CONTRACTOR'S ATTENTION IS DIRECTED TO THE REQUIRED NOTIFICATIONS. THE CONTRACTOR SHALL COORDINATE ALL ASPECTS OF HIS WORK WITH SAID UTILITY COMPANIES.
25. ASBESTOS MATERIAL MAY BE ENCOUNTERED WHEN WORKING IN BUILDINGS, STEAM VAULTS OR IN THE VICINITY OF EXISTING STEAM/CONDENSATE PIPES. IF ENCOUNTERED, THE CONTRACTOR SHALL STOP WORK IN THIS AREA AND INFORM THE OWNER. THE OWNER SHALL BE RESPONSIBLE FOR ASBESTOS REMOVAL. THE CONTRACTOR SHALL BE RESPONSIBLE FOR COORDINATING THE WORK WITH THE OWNER'S ASBESTOS REMOVAL WORK.
26. THE CONTRACTOR SHALL ANTICIPATE THAT ADDITIONAL WORK BY OTHERS WILL BE ONGOING IN THE VICINITY OF THE PROJECT SITE, AND THE CONTRACTOR SHALL COORDINATE ALL ASPECTS OF HIS WORK WITH SAID SURROUNDING WORK, INCLUDING BUT NOT LIMITED TO:
- * YOUNG BUILDING ENVELOPE PROJECT – BUILDING ENVELOPE AND ROOF IMPROVEMENTS.
 - * GURLEYVILLE ROAD PUMP STATION PROJECT – UPGRADE THE PUMP STATION AND MODIFICATIONS TO SANITARY FORCE MAIN IN HORSE BARN HILL ROAD.
 - * FLOOR REPLACEMENT PROJECT RATCLIFFE HICKS BUILDING.
 - * HICKS ARENA RETAINING WALL STABILIZATION PROJECT – STABILIZE RETAINING WALL NORTH SIDE OF ARENA.
 - * CTDOT SIGNALIZATION PROJECT AT THE NORTH EAGLEVILLE ROAD AND GURLEYVILLE ROAD INTERSECTIONS.
 - * EVERSOURCE – CABLES AND WIRING IN UNDERGROUND INFRASTRUCTURE.
27. ALL PIPING INSTALLED BY THE CONTRACTOR INSIDE ALL BUILDINGS AND ALL VAULTS SHALL BE INSULATED IN ACCORDANCE WITH SPECIFICATION SECTION 15082.

STANDARD ABBREVIATIONS

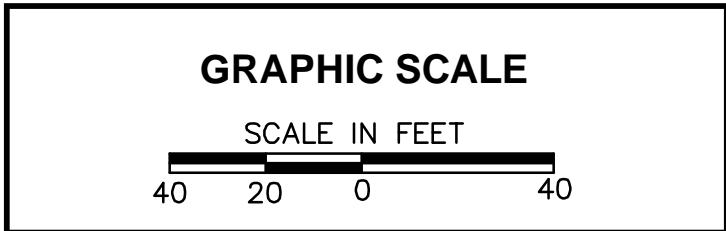
ASTM	AMERICAN STANDARDS FOR TESTING MATERIALS	LT	LOC	LEFT
BM	BENCH MARK	LP	LIGHT POLE	LOCATION
BIT	BITUMINOUS	MAX	MAXIMUM	
CIP	CAST IRON PIPE	MIN	MINIMUM	
CB	CATCH BASIN	MH	MANHOLE	
CL/ C/L	CENTER LINE	MISC	MISCELLANEOUS	
CL & P	CONNECTICUT LIGHT& POWER	MJ	MECHANICAL JOINT	
CMP	CORRUGATED METAL PIPE	MON	MONUMENT	
CONN / CT	CONNECTICUT	NIC	NOT IN CONTRACT	
CONC	CONCRETE	N	NORTH	
CPP	CORRUGATED POLYETHYLENE PIPE	NTS	NOT TO SCALE	
		N/A	NOT APPLICABLE	
CSW	CONCRETE SIDEWALK	N/F	NOW OR FORMERLY	
CWC	CONNECTICUT WATER CO.	OH	OVERHEAD	
CY	CUBIC YARDS	PROP	PROPOSED	
DIA	DIAMETER	REINF	REINFORCED	
DIM	DIMENSION	RCP	REINF CONC PIPE	
DI	DUCTILE IRON	REV	REVISION	
DIP	DUCTILE IRON PIPE	ROW	RIGHT OF WAY	
DOT	DEPARTMENT OF TRANSPORTATION	RT	RIGHT	
	DRAWING	SAN	SANITARY	
DWG	EAST / ELECTRIC	SCH	SCHEDULE	
E	EDGE OF PAVEMENT	SF	SQUARE FEET	
EOP	ELEVATION	S	SOUTH / SANITARY MH	
ELEC	ELECTRIC	STA	STATION	
EL/ELEV	ELECTRIC MANHOLE	STD	STANDARD	
EMH	EXISTING	STRM/ST	STORM	
EX/EXIST	EXISTING	TB	THRUST BLOCK	
FES	FLARED END SECTION	TF	TOP OF FRAME	
G	GAS	TYP	TYPICAL	
CG	GAS GATE	USA	UNITED STATES OF AMERICA	
HYD	HYDRANT	W	WATER	
IN	INCHES	WG/WV	WATER GATE/WATER VALVE	
INC	INCORPORATED	&	AND	
INV	INVERT			

LEGEND

DESCRIPTIONS	EXISTING	PROPOSED
TREELINE		
BUSHES		
TREES		
ABANDON PIPE/STRUCTURE		
REMOVE PIPE/STRUCTURE		
SILT FENCE		
HAYBALE COFFERDAM		
INLET PROTECTION		
STORM PIPE		
STORM PIPE		
WATER PIPE		
HYDRANT		
WATER BUTTERFLY VALVE		
WATER GATE VALVE		
SIGN		
UTILITY POLE		
TEST PIT		



SURVEY CONTROL



CERTIFICATION:

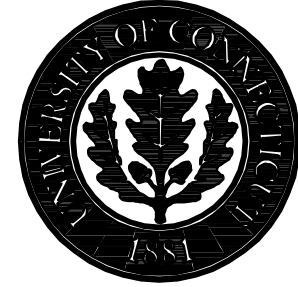


CONSULTANT:

AECOM
500 ENTERPRISE DRIVE
ROCKY HILL, CT 06067
1-(860)-529-8882

REVISIONS:

MARK	DATE	DESCRIPTION
	5-11-15	ADDENDUM #1
	5-15-15	ADDENDUM #2



UNIVERSITY OF CONNECTICUT
PLANNING, ARCHITECTURAL
& ENGINEERING SERVICES
31 LEDOYT ROAD UNIT 3038
STORRS, CONNECTICUT 06269-3038
TELEPHONE: (860) 486-3127
FACSIMILE: (860) 486-3177

PROJECT:

NORTH EAGLEVILLE
ROAD AREA
INFRASTRUCTURE
REPAIR/REPLACEMENT
PHASE II
YOUNG QUAD UTILITIES

PROJECT NO: 901954

WORK ORDER NO:

FILE NAME:

P:\CIVIL\YOUNG
QUAD\SHEETS\G-01

AUTHOR: PETER SAMMIS

DRAFTER: KEVIN MCKENNA

SCALE: AS NOTED

PRINT DATE: APRIL 21, 2015

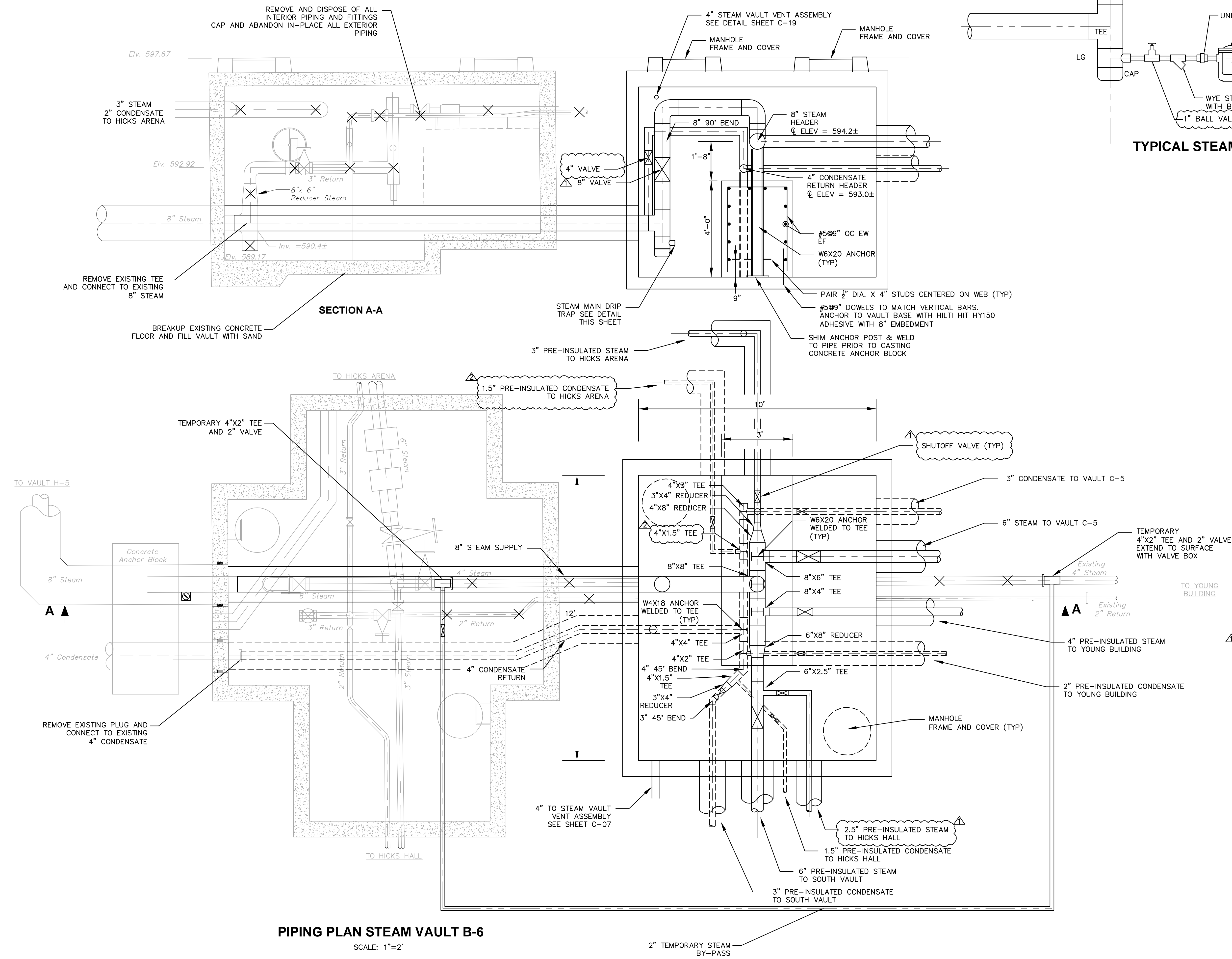
SHEET TITLE:

**LEGEND, SURVEY
CONTROL &
GENERAL NOTES**

SHEET:

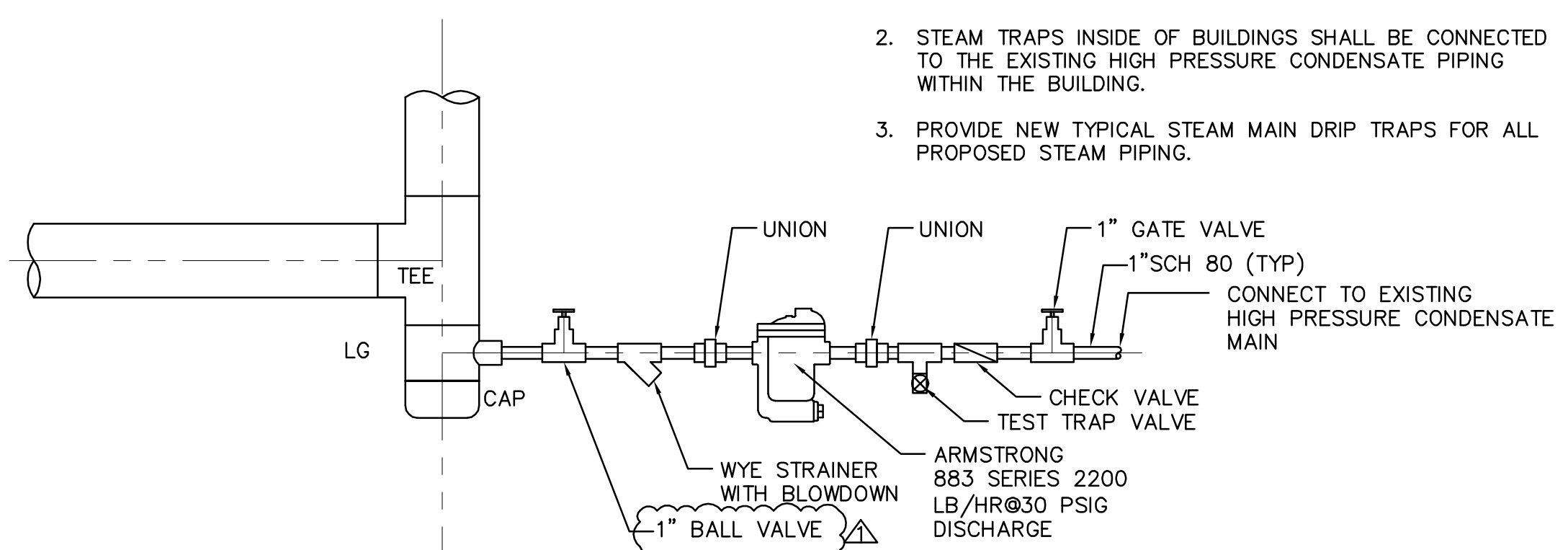
C-01

SHEET: _ of _



PIPING PLAN STEAM VAULT B-6

SCALE: 1"=2'



TYPICAL STEAM MAIN DRIP TRAP DETAIL

NOTE:

- 1. STEAM TRAPS INSIDE OF ALL STEAM VAULTS SHALL BE CONNECTED TO THE HIGH PRESSURE CONDENSATE PIPE DISCHARGING AT YOUNG BUILDING.
- 2. STEAM TRAPS INSIDE OF BUILDINGS SHALL BE CONNECTED TO THE EXISTING HIGH PRESSURE CONDENSATE PIPING WITHIN THE BUILDING.
- 3. PROVIDE NEW TYPICAL STEAM MAIN DRIP TRAPS FOR ALL PROPOSED STEAM PIPING.

NOTES:

- 1. EXISTING VAULT B-6 INCLUDING ALL PIPING SHALL REMAIN ACTIVE UNTIL PROPOSED ADJACENT VAULT IS ACTIVE.
- 2. STEAM PIPING SHALL BE SCHEDULE 40, A106B, SEAMLESS.
- 3. CONDENSATE PIPING SHALL BE SCHEDULE 80, A106B, SEAMLESS.
- 4. REMOVE 2" TEMPORARY STEAM BYPASS, ALL ACCESSORIES AND PLUG ALL OPENINGS AFTER THE PROPOSED STEAM PIPING IS OPERATIONAL.
- 5. PROVIDE 1" HIGH PRESSURE CONDENSATE LINE FROM STEAM VAULT B-6 TO YOUNG BUILDING. MAKE CONNECTIONS WITH THE HIGH PRESSURE CONDENSATE LINES FROM VAULT C-6 AND THE SOUTH VAULT.
- 6. PROVIDE DIRECT BURIED 2" PVC CONDUIT AT 30" MINIMUM COVER FROM VAULT B-6 TO YOUNG BUILDING FOR LOW VOLTAGE ELECTRIC AND SIGNAL CABLE.
- 7. THE INTENT OF THE PRE-INSULATED PIPING SYSTEM IS TO ANCHOR PIPING INSIDE THE VAULT AND ACCOMMODATE THERMAL EXPANSION MOVEMENT IN THE VARIOUS PROPOSED L BEND, Z BEND AND LOOPS OUTSIDE THE VAULT.
- 8. THE PRE-INSULATED PIPING SUPPLIER SHALL PROVIDE A STRESS ANALYSIS OF BOTH PROPOSED UNDERGROUND AND STEAM VAULT PIPING, AND MAKE RECOMMENDATIONS FOR STEAM VAULT PIPING MODIFICATIONS TO ACCOMMODATE THERMAL EXPANSION.
- 9. ANCHORS, ANCHOR BLOCKS AND ANCHOR BLOCK REINFORCEMENT SHOWN ARE APPROXIMATE, AND MAY CHANGE BASED ON THE STRESS ANALYSIS PROVIDED BY THE PRE-INSULATED PIPING SYSTEM SUPPLIER.
- 10. THE ENGINEER SHALL RE-EVALUATE ANCHORS, ANCHOR BLOCKS AND ANCHOR BLOCK REINFORCEMENT BASED ON THE STRESS ANALYSIS PROVIDED BY THE PRE-INSULATED PIPING SYSTEM SUPPLIER.
- 11. ANNUAL SPACE VENT OF PRE-INSULATED PIPING SHALL BE PIPED INTO STEAM VAULT VENT.
- 12. STANDARD MANHOLE FRAMES AND COVERS SHALL BE CAST IRON, 36" DIAMETER, H20 LOADING WITH "STEAM-XX" CAST INTO COVER.
- 13. ALTERNATE FIBERGLASS FRAMES AND COVERS SHALL BE COMPOSITE FIBERGLASS, 36" DIAMETER, H20 LOADING, WATERTIGHT, WITH "STEAM-XX" CAST INTO THE COVER, AS MANUFACTURED BY OPW FIBRELITE, SMITHFIELD N.C. OR APPROVED EQUAL.
- 14. CONTRACTOR SHALL PROVIDE SHUT OFF VALVES FOR ALL BRANCH STEAM AND CONDENSATE LINES IN VAULT.
- 15. THE EXISTING VAULT B-6, INCLUDING ALL PIPING, VALVES, CONCRETE, INSULATION, MANHOLE FRAMES AND COVERS AND ALL APPURTENANCES SHALL BE REMOVED AND DISPOSED OF FOLLOWING INSTALLATION AND OPERATION OF PROPOSED VAULT B-6 AND PIPING.

CERTIFICATION:



CONSULTANT:

AECOM
500 ENTERPRISE DRIVE
ROCKY HILL, CT 06067
1-(860)-529-8882

REVISIONS:

MARK	DATE	DESCRIPTION
Δ	5-11-15	ADDENDUM #1
Δ	5-15-15	ADDENDUM #2



UNIVERSITY OF CONNECTICUT
PLANNING, ARCHITECTURAL
& ENGINEERING SERVICES
31 LEDOYT ROAD UNIT 3038
STORRS, CONNECTICUT 06269-3038
TELEPHONE: (860) 486-3127
FACSIMILE: (860) 486-3177

PROJECT:

NORTH EAGLEVILLE
ROAD AREA
INFRASTRUCTURE
REPAIR/REPLACEMENT
PHASE II
YOUNG QUAD UTILITIES

PROJECT NO: 901954

WORK ORDER NO:

FILE NAME:
P:\CIVIL\YOUNG
QUAD\SHEETS\C-22

AUTHOR: PETER SAMMIS

DRAFTER: KEVIN MCKENNA

SCALE: AS NOTED

PRINT DATE: APRIL 21, 2015

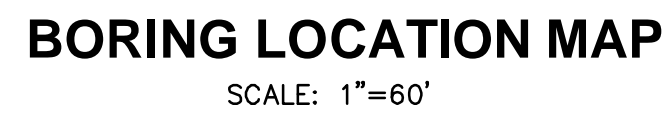
SHEET TITLE:

STEAM VAULT B-6

SHEET:

C-22

SHEET: _ of _



BORING LOG B-1

BORING LOG B-2

BORING LOG B-3

BORING LOG B-4

BORING LOG B-5

BORING LOG B-6

SHEET: - of -

FORM OF PROPOSAL

E. SCHEDULE OF ALTERNATES: (Revised 5/14/15)

Provide Alternate Prices which reflect the work of the bid package under which this bid proposal was submitted and shall remain **valid for the life of the project** and include **all costs** for a complete installation. All pricing is inclusive of all costs of wages, applicable taxes, benefits, and applicable insurance. The Prices herein shall remain valid for the life of the project and include all costs for a complete installation. Alternate prices are good for both adds and deducts.

Alternate No. 1 : Steam Vault Manhole Covers

1. **Base Bid:** The base bid includes Steam Vault manhole frames and covers manufactured of cast iron as specified in Section 03420 2.02.
2. **Alternate:** The alternate bid includes Steam Vault watertight manhole frames and covers manufactured of fiberglass as specified in Section 03420 2.03.

Add/Deduct (circle one): \$ _____

Alternate No. 2 : Steam Vault Waterproofing System

1. **Base Bid:** The base bid includes Steam Vault bituminous waterproofing system as specified in Section 03420 2.04.
2. **Alternate 2A:** The alternate bid includes Steam Vault HDPE Membrane waterproofing system as specified in Section 03420 2.05.

2A - Add/Deduct (circle one): \$ _____

3. **Alternate 2B:** The alternate bid includes Steam Vault Bentonite membrane waterproofing system as specified in Section 03420 2.06.

2B - Add/Deduct (circle one): \$ _____

Alternate No. 3: – Turf Establishment

1. **Base Bid:** The base bid includes 8" of topsoil and turf establishment by seeding and/or hydroseeding of all disturbed areas within the Young Quad Utilities Work Zone as indicated on Sheets M-01 through M-03, and not subject to other surface improvements such as sidewalk, pavement and mulch. At a minimum the disturbed areas shall include all areas within the following boundaries: west boundary – stone wall along Route 195; north boundary – east/west sidewalk south of Ratcliffe Hicks; east boundary – north/south sidewalk west of Young Building; south boundary – east/west sidewalk north of Hicks Hall. Additionally, all areas within the Young Quad Utilities Work Zone disturbed by the Contractor during construction activities shall be provided with 8" topsoil and turf establishment. Disturbed areas shall be defined as all areas subject to disturbance by construction activities, excavation, backfill, equipment traffic, trailer, material storage, and laydown areas. Allowance No. 3 provides for the substitution of turf establishment by means of sodding in the disturbed areas, if requested by the Owner.

Contractor's Initials: _____

FORM OF PROPOSAL

2. Alternate No. 3A: The Alternate 3A bid includes the Alternate No. 3 Base Bid, plus for all remaining areas indicated on attached Sheet L-03A: stripping all turf; tilling/decompaction to 8" depth; augmentation of existing soils for pH and organics to comply with Section 02939, soil amendments and turf establishment by means of hydroseeding.

3A - Add/Deduct (circle one): \$ _____

3. Alternate No. 3B: The Alternate 3B bid includes all areas indicated on attached Sheet L-03a as Turf Establishment, which includes the areas delineated in Alternate No. 3 Base Bid: stripping all turf; tilling/decompaction to 8" depth; augmentation of existing soils for pH and organics to comply with Section 02939, soil amendments and turf establishment all area by means of sodding. Any reading of 3B to say only the additional areas shall be established via sod is incorrect.

3B - Add/Deduct (circle one): \$ _____

END OF ALTERNATES

Contractor's Initials: _____

UNIVERSITY OF CONNECTICUT
NORTH EAGLEVILLE ROAD AREA INFRASTRUCTURE PHASE II
#901954

FORM OF PROPOSAL

F. SCHEDULE OF UNIT PRICES: (Revised 5/14/15)

All rates are inclusive of all costs of wages, applicable taxes, benefits, applicable insurance. The rates provided will be negotiated and included as part of the contract and of your subcontracts. The Unit Prices herein shall remain valid for the life of the project and include all costs for a complete installation. Unit prices are good for both adds and deducts.

Unit Price 1: "Removal Of Unsatisfactory Soil And Replacement With Satisfactory Soil Material"

Description: Unsatisfactory soil excavation and disposal off site and replacement with satisfactory fill material or engineered fill from off site, as required, according to Section 02221 "Trench Excavation, Backfilling and Compaction". Replacement materials shall be "Compacted Granular Fill" in accordance with Section 02234.

Per Cubic Yard: \$ _____ (See Allowance #1 – 150 cubic yards are to be carried in Base Bid)

Unit Price No. 2: "Rock Excavation And Replacement With Satisfactory Soil Material"

Description: Classified rock excavation and disposal off site and replacement with satisfactory fill material or engineered fill from off site, as required, according to Section 02221 "Trench Excavation, Backfilling and Compaction". Replacement materials shall be "Compacted Granular Fill" in accordance with Section 02234.

Per Cubic Yard: \$ _____ (See Allowance #2 – 150 cubic yards are to be carried in Base Bid)

Unit Price No. 3: "Turf Establishment By Means Of Sodding"

Description: Turf establishment by means of sodding, if requested by the Owner, according to Section 02936 "Turfs And Grasses".

Per Square Yard: \$ _____

Unit Price No. 4: "Concrete Walkway"

Description: Replacement of concrete walkways beyond the limits of work identified on the Contract Drawings, if requested by the Owner, according to Section 02511 "Concrete Walkway". Price includes removal and disposal of existing concrete walkways to be replaced. Concrete walkway details shall be in accordance with the concrete sidewalk details on Sheet C-27.

Per Square Yard: \$ _____ (See Allowance #6 – 100 square yards are to be carried in Base Bid)

Unit Price No. 5: "Process Aggregate Base"

Description: Replacement of process aggregate base beyond the limits of the Contract Drawings, if requested by the Owner, according to Section 02235 "Process Aggregate Base".

Per Cubic Yard: \$ _____ (See Allowance #7 – 100 cubic yards are to be carried in Base Bid)

Unit Price No. 6: "Bituminous Pavement"

Description: Replacement of bituminous pavement beyond the limits of the Contract Drawings, if requested by the Owner, according to Section 02500 "Bituminous Concrete". Price includes removal and disposal of existing bituminous pavement to be replaced. Pavement section shall be in accordance with permanent trench pavement detail for Town Roads on Sheet C-27.

Per Ton: \$ _____ (See Allowance #8 – 100 tons are to be carried in Base Bid))

Contractor's Initials: _____

UNIVERSITY OF CONNECTICUT
NORTH EAGLEVILLE ROAD AREA INFRASTRUCTURE PHASE II
#901954

FORM OF PROPOSAL

Unit Price No. 7: "Mulch"

Description: Placement of mulch beyond the limits of the Contract Drawings, if requested by the Owner, according to Section 02938 "Planting". Price includes edging, removal and disposal of turf in the area of mulch placement.

Per Cubic Yard: \$ _____ (See Allowance #9 – 50 cubic yards are to be carried in Base Bid)

Unit Price No. 8: "Hydroseeding"

Description: Turf establishment by means of hydroseeding, if requested by the Owner, according to Section 02936 "Turfs and Grasses".

Per Square Yard: \$ _____

Unit Price No. 9: "Topsoil"

Description: Provide and place topsoil, if requested by the Owner, according to Section 02939 "TopSoil and Planting Mix".

Per Cubic Yard: \$ _____

Unit Price No. 10: "Topsoil Reconditioning"

Description: Stripping of existing turf, soil de-compaction to a minimum of 8" depth, augmentation of existing soils for pH and organics to comply with Section 02939, and soil amendments.

Per Square Yard: \$ _____

Unit Price No. 11: "Survey Monuments"

Description: Provide 4' deep by 6" diameter cast-in-place concrete survey monuments at locations to be determined by the Owner within the Young Quad Utilities work Zone. Owner to provide op medallion to be installed by Contractor.

Each: \$ _____

Unit Price No. 12: "Soil De-compaction with SSAT Within CRZ"

Description: Provide soil de-compaction with a SuperSonic Airtool within the critical root zones of trees in accordance with Section 02937 3.2R.

Per Square Yard: \$ _____

Unit Price No. 13: "Milling and Overlay"

Description: Mill existing pavement to a 2" depth, and overlay milled area with 2' minimum thickness of class 1 bituminous concrete, in accordance with section 02500 and Form 816.

Per Square Yard: \$ _____

End of Unit Prices

Contractor's Initials: _____